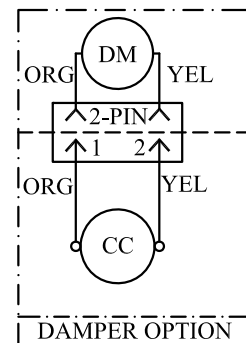


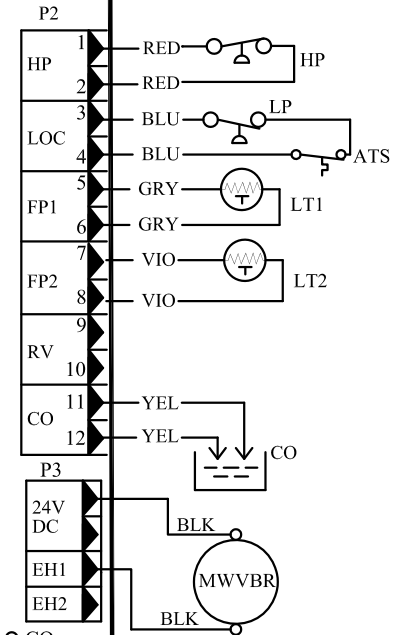
NOTES

1. Compressor and Blower Motor thermally protected internally.
2. All wiring to the unit must comply with NEC and local codes
low voltage wiring shall be Class 2 or equivalent.
3. Field Use Only: Transformer wiring is voltage sensitive. Use layout corresponding to the unit voltage.
4. L71 provides low temperature protection for WATER. When using ANTI-FREEZE solutions, cut JW3 jumper.
5. Typical heat pump thermostat wiring shown. Refer to thermostat IOM for wiring to the unit. T-Stat wiring must be "Class 1" and voltage rating equal to or greater than unit supply voltage.
6. 24V Alarm signal shown. For Dry Alarm contact between AL1 & AL2, cut JW1 for CXM/DXM Gen2 or JW4 DXM.

CONTROL BOX LAYOUT




DOOR TEST
BUTTON



SEE
NOTE 4

JW3
FP1
JW2



Dip Switch

1	UPS:DISABLED/ENABLED
2	STAGE2: 2/1
3	NOT USED
4	DDC OUTPUT: DDC/NORMAL
5	FP 1/FP 2 FAULTS: 3/1

Off On

SEE NOTE 6

CXM
Microprocessor
Control Logic

SEE I.O.M. FOR DIP SWITCH DEFINITIONS

SEE I.O.M. FOR DIP SWITCH DEFINITIONS