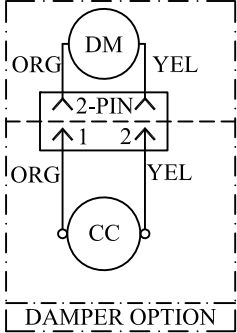
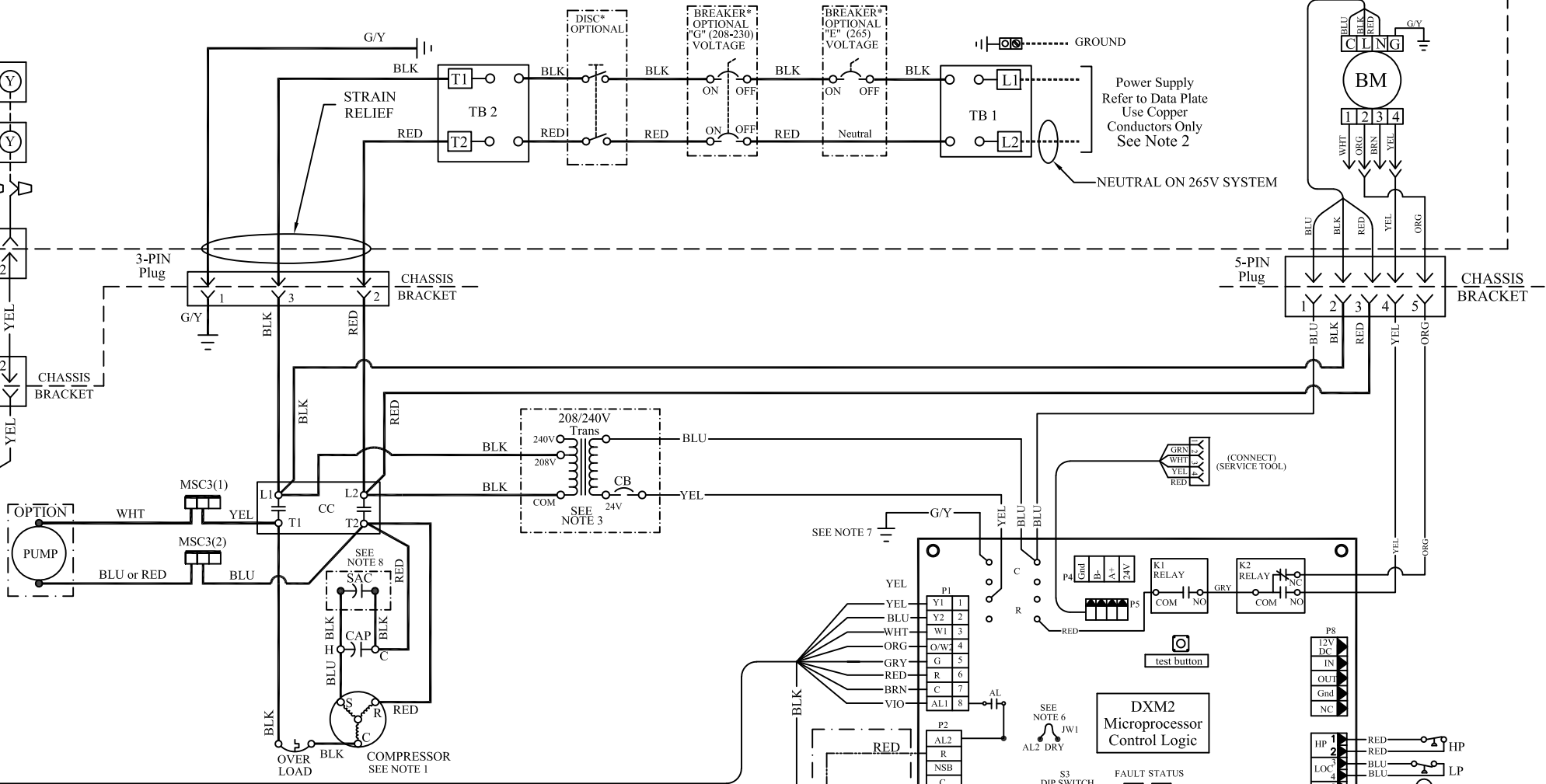


NOTES:

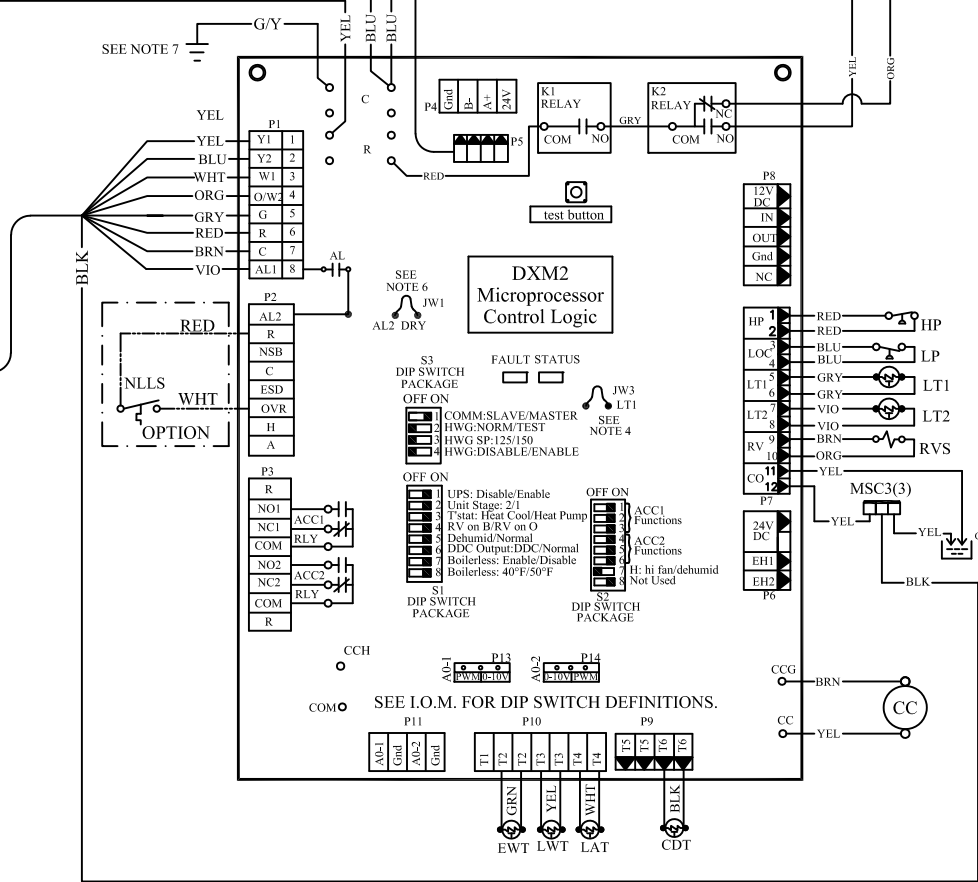
- NOTES:**
1. Compressor and Blower Motor thermally protected internally.
 2. All wiring to the unit must comply with NEC and local codes
low voltage wiring shall be Class 2 or equivalent.
 3. Field Use Only: Transformer wiring is voltage sensitive. Use layout corresponding to the unit voltage.
 4. LT1 provides low temperature protection for WATER. When using ANTI-FREEZE solutions, cut JW3 jumper.
 5. Typical heat pump thermostat wiring shown. Refer to thermostat IOM for wiring to the unit. T-Stat wiring must be "Class 1" and voltage rating equal to or greater than unit supply voltage.
 6. 24V Alarm signal shown. For Dry Alarm contact between AL1 & AL2, cut JW1 for CXM/DXM Gen2 or JW4 DXM.
 7. Transformer Secondary Ground via control board standoffs and/or Common to Control Box.
 8. SAC is factory provided for R410A chassis but not for R454B chassis.



This diagram shows the internal layout of the 1000 Series Control Panel. It includes a detailed view of the control panel's internal components, such as the control panel, control panel, and control panel. The diagram also shows the internal wiring and connectors, including the control panel, control panel, and control panel. The diagram is a top-down view, showing the internal components and their connections.

[illegible]

TB 3 (L1 & L2) WILL TAKE PLACE OF
CC (L1 & L2).



- | | |
|-------|---|
| ACO | Automatic Change Over |
| AL | Alarm Relay Contacts |
| ATS | Air Temperature Sensor |
| BM | Blower Motor |
| BMC | Blower Motor Capacitor |
| BR | Blower Relay / Blower Contactor |
| CAP | Capacitor |
| CB | Circuit Breaker |
| CC | Compressor Contactor |
| CDT | Compressor Discharge Temperature |
| CO | Condensate Overflow Sensor |
| CR | Compressor Relay |
| CRC | Compressor Run Capacitor |
| CS | Current Sensor |
| DHW | Domestic Hot Water |
| DM | Damper Motor |
| DTS | Discharge Temperature Switch |
| EEV | Electronic Expansion Valve |
| EHC | Electronic Heat Contactor |
| ES | End Switch |
| ETC | Electronic Temperature Control |
| EWT | Entering Water Temp Sensor |
| FSR | Fan Speed Relay |
| FSS | Fan Speed Switch |
| HP | High Pressure Switch |
| HPWS | High Pressure Water Switch |
| HR | Heating Relay |
| JW | Jumper Wire |
| LAT | Leaving Air Temperature |
| LOR | Lock Out Relay |
| LP | Low Pressure Switch |
| LT1 | Sensor, low temp protection, water coil |
| LT2 | Sensor, low temp protection, air coil |
| LWT | Leaving Water Temp Sensor |
| MCO | Manual Change Over |
| MOD | Modulating Water Valve |
| MS | Manual Starter |
| MSC | Multi Splice Connector |
| MWV | Motorized Water Valve |
| NLL | Night Low Limit Switch |
| PDB | Power Distribution Block |
| POT | Potentiometer |
| P1 | Field Wiring Terminal Block |
| PR | Pump Relay |
| RAS | Return Air Sensor |
| RVS | Reversing Valve Solenoid |
| SAC | Start Assist Capacitor |
| SAS | Supply Air Sensor |
| TB | Terminal Block |
| TRANS | Transformer |
| UMT | Unit Mounted Thermostat |
| VFD | Variable Frequency Drive |
| VSP | Variable Speed Pump |
| WSTAT | Water Stat |