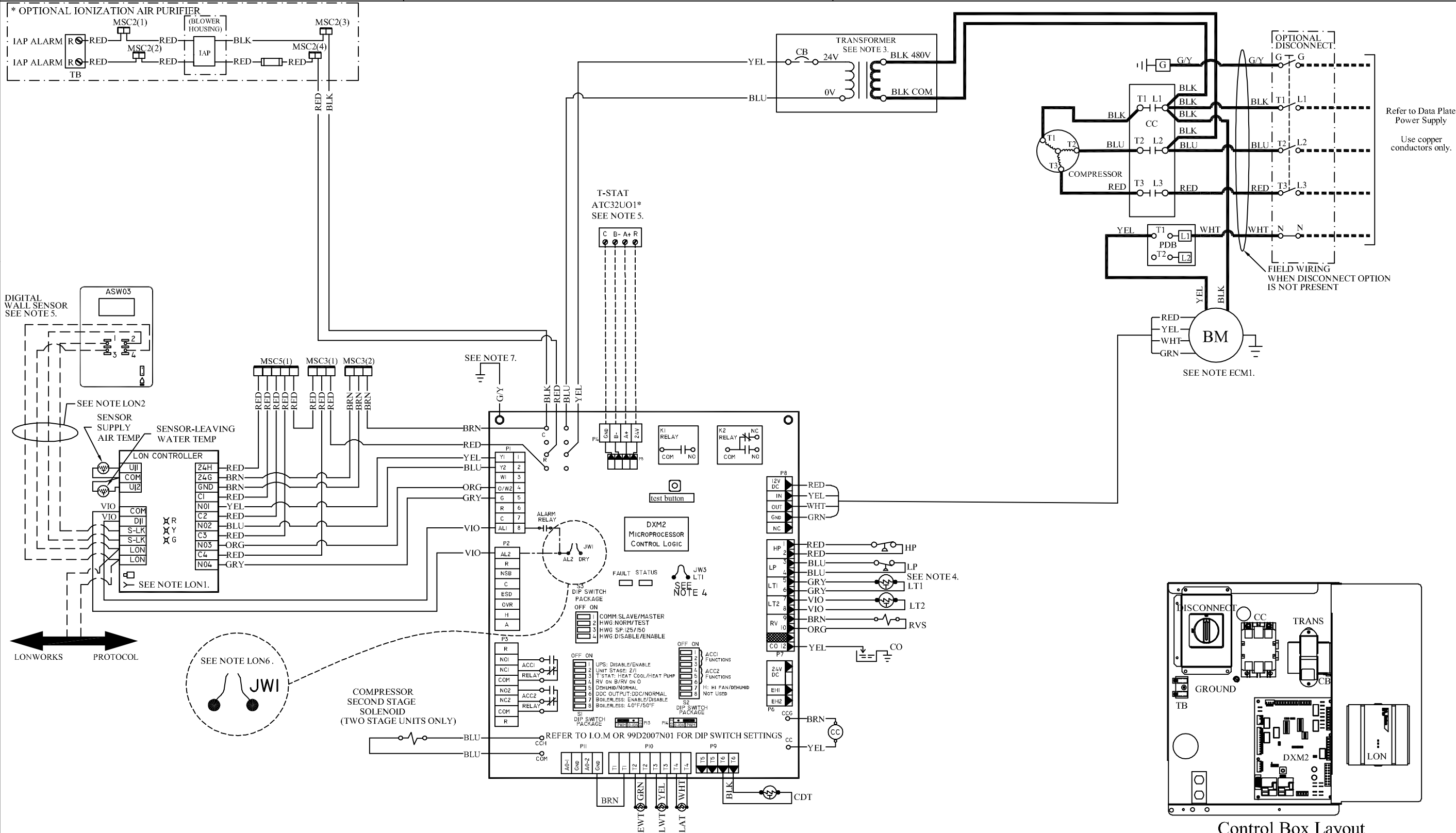


ACO  
AL  
ATS  
BM  
BMC  
BR  
CAP  
CB  
CC  
CDT  
CO  
CR  
CRC  
CS  
DHW  
DM  
DTS  
EEV  
EHC  
ES  
ETC  
EWT  
FSR  
FSS  
HP  
HPWS  
HR  
JW  
LAT  
LOR  
LP  
LT1  
LT2  
LWT  
MCO  
MOD  
MS  
MSC  
MWV  
NLL  
PDB  
POT  
P1  
PR  
RAS  
RVS  
SAC  
SAS  
TB  
TRANS  
UMT  
VFD  
VSP  
WSTAT

NOTES:

1. Compressor and Blower Motor thermally protected internally.
2. All wiring to the unit must comply with NEC and local codes  
low voltage wiring shall be Class 2 or equivalent.
3. Transformer wiring is voltage sensitive. Use layout corresponding to the unit voltage.
4. LTI provides low temperature protection for WATER. When using  
ANTI-FREEZE solutions, cut JW3 jumper.
5. Typical heat pump thermostat wiring shown. Refer to thermostat IOM for  
wiring to the unit. T-Stat wiring must be "Class 1" and voltage rating equal to or  
greater than unit supply voltage.
6. 24V Alarm signal shown. For Dry Alarm contact between AL1 & AL2, cut JW1  
for CXM/DXM Gen2 or JW4 DXM.
7. Transformer Secondary Ground via CXM/DXM board standoffs and screws  
to Control Box.

ECM1. For ECM Blower Motor air flow adjustment and diagnostic information refer to I.O.M.  
LON1. Refer to LON, OR TSTAT Installation, Application, and Operation Manual for control wiring to the unit.  
LON2. Optional LON wires. Only connect if LON connection is desired at the wall sensor.  
LON6. Factory cut JW1 jumper. Dry Contact will be available between AL1 and AL2.



## Control Box Layout