

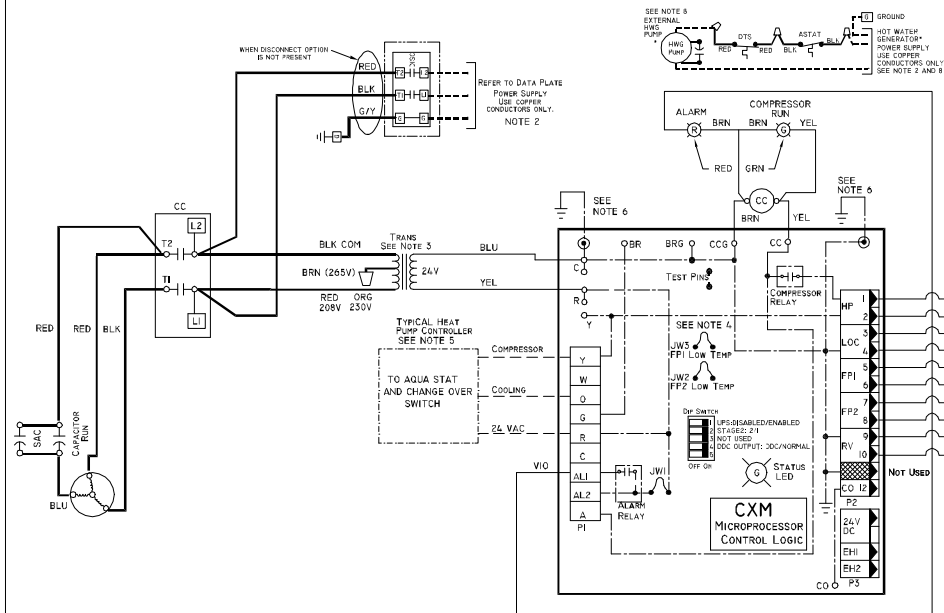
LEGEND	
FACTORY LINE VOLT WIRING	○-○-○ CAPACITOR
FACTORY LOW VOLT WIRING	○-○-○ SOLENOID COIL
FIELD LINE VOLT WIRING	○-○-○ RELAY CONTACTS - N.O.
FIELD LOW VOLT WIRING	○-○-○ TEMPERATURE SWITCH
PRINTED CIRCUIT TRACE	○-○-○ SWITCH-HIGH PRESSURE
OPTIONAL WIRING	○-○-○ SWITCH-LOSS OF CHARGE
RELAY / CONTACTOR COIL	○-○-○ GROUND
THERMISTOR	○-○-○ WIRE NUT
CONDENSATE PAN	
CIRCUIT BREAKER	
LED	
SPLICE CAP	

- NOTES
1. COMPRESSOR THERMALLY PROTECTED INTERNALLY.
 2. ALL WIRING TO THE UNIT MUST COMPLY WITH NEC & LOCAL CODES.
 3. TRANSFORMER IS WIRED TO 265V (BRN) LEAD FOR 265/1/60 UNITS.
FOR 220-240V OR 230V, DISCONNECT (BRN) LEAD AT LI AND CONNECT (ORG) LEAD TO LI. CLOSE OPEN END OF BRN AND RED LEADS WITH INSULATION TAPE.
FOR 208V, DISCONNECT (BRN) LEAD AT LI AND CONNECT (RED) LEAD TO LI. CLOSE OPEN ENDS OF BRN AND ORG LEADS WITH INSULATION TAPE.
TRANSFORMER IS ENERGY LIMITING OR MAY HAVE CIRCUIT BREAKER.
 4. FPI THERMISTOR PROVIDES FREEZE PROTECTION FOR SOURCE WATER. WHEN USING ANTI-FREEZE SOLUTIONS, CUT JW3 JUMPER.
 5. CHECK INSTALLATION WIRING INFORMATION FOR CONTROLLER HOOKUP. REFER TO CONTROL INSTALLATION INSTRUCTIONS FOR WIRING TO THE UNIT. CONTROL WIRING MUST BE "CLASS 1" AND VOLTAGE RATING EQUAL TO OR GREATER THAN UNIT SUPPLY VOLTAGE.

6. TRANSFORMER SECONDARY GROUND VIA CXM BOARD STANDOFFS & SCREWS TO CONTROL BOX. (GROUND AVAILABLE FROM TOP TWO STANDOFFS AS SHOWN.)
8. AQUA STAT IS SUPPLIED WITH UNIT AND MUST BE WIRED IN SERIES WITH THE HOT LEG TO THE PUMP. AQUA STAT IS RATED FOR VOLTAGE UP TO 277V.

CXM CONTROLLER FAULT CODES

DESCRIPTION OF OPERATION	LED	ALARM RELAY
NORMAL MODE	ON	OPEN
NORMAL MODE W/ UPS WARNING	ON	CYCLE (CLOSED 5 SEC. OPEN 25 SEC.)
CXM IS NON-FUNCTIONAL	OFF	OPEN
FAULT RETRY	SLOW FLASH	OPEN
LOCKOUT	FAST FLASH	CLOSED
OVER/UNDER VOLTAGE SHUTDOWN	SLOW FLASH	OPEN (CLOSED AFTER 15 MIN.)
TEST MODE-NO FAULT IN MEMORY	FLASHING CODE 1	CYCLING CODE 1
TEST MODE-HP FAULT IN MEMORY	FLASHING CODE 2	CYCLING CODE 2
TEST MODE-LP FAULT IN MEMORY	FLASHING CODE 3	CYCLING CODE 3
TEST MODE-FPI FAULT IN MEMORY	FLASHING CODE 4	CYCLING CODE 4
TEST MODE-FP2 FAULT IN MEMORY	FLASHING CODE 5	CYCLING CODE 5
TEST MODE-CO FAULT IN MEMORY	FLASHING CODE 6	CYCLING CODE 6
TEST MODE-OVER/UNDER SHUTDOWN IN MEMORY	FLASHING CODE 7	CYCLING CODE 7
TEST MODE-UPS IN MEMORY	FLASHING CODE 8	CYCLING CODE 8
SWAPPED FPI/FP2 LOCKOUT	FLASHING CODE 9	CYCLING CODE 9



COMPONENT LOCATION

